



NUI Galway  
OÉ Gaillimh

# SUMMER SCHOOL IN GALWAY IRELAND

# 2018





# CONTENTS

Message from the Director **2**

Ecology: Living Landscapes in the West of Ireland **3**

Education in Ireland **4**

Irish Language **5**

Irish Studies **6**

Achill Archaeological Field School **9**

Caherconnell Archaeological Field School **10**

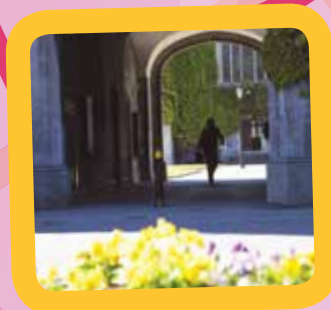
Galway Archaeological Field School **11**

The Irish Fieldschool of Prehistoric Archaeology **12**

General Information **14**

Festivals in July **15**

Did You Know **16**





## MESSAGE FROM THE DIRECTOR

Welcome to the NUI Galway International Summer School, which offers a range of courses in Irish Studies, Education in Ireland, Irish Language, Geology, Ecology and Archaeology.

The courses aim to give you a rich and diverse perspective of the subject area and are taught by lecturers and education professionals who have a vast range of knowledge of their subject matter. Educational field trips are an integral part of the courses and provide you with an opportunity to gain hands-on knowledge of your specialism to its fullest extent. During your stay, you will also have time to explore Galway City, which is a vibrant, youthful university city with an enchanting array of summer festivals which attract visitors from all over the world. As Galway is within easy access to many parts of Ireland, you will also have an opportunity to visit other regions during your trip.

I look forward to welcoming you as a student to NUI Galway and wish you a wonderful stay in the West of Ireland. The programme team is here to facilitate your learning and to help you experience student life in a different setting. I hope that your learning experiences in NUI Galway bring you both personal and professional enhancement.

**Nuala McGuinn**

Director, International Summer School

# ECOLOGY: LIVING LANDSCAPES IN THE WEST OF IRELAND

Academic Director: Dr Michael Gormally

This new and exciting course offers students practical experience of the natural environment in the west of Ireland. It provides students with survey skills to identify natural resources and develops their skills to evaluate the sustainable use and conservation of Ireland's ecological resources. Located in Galway, the summer school is ideally located to immerse students in the wonderful wealth of wildlife and habitats found in County Galway and the West of Ireland.

## COURSE CONTENT

This course is designed to encourage a multi-disciplinary approach to studying ecology by looking at all aspects of how these habitats are created and maintained through natural processes and anthropogenic activity. It will also consider conservation and sustainability issues and how a sound understanding of these ecological processes is used to combat the challenges facing the environment.

The summer school will consist of two courses, each two weeks in duration, which will focus on a selection of habitat types in the east and west of the county.

### Course 1: SS1151 Living Landscapes in the Connemara & Joyce

**Country:** Focusing on Connemara, Lough Corrib and Joyce Country and examining the ecology and conservation of blanket bogs, uplands and freshwater habitats of County Galway.

### Course 2: SS1152 Living Landscapes of the Burren and East County

**Galway:** Focusing on the habitats and species of the Burren and East County Galway including limestone pavement, turloughs and the raised bogs as well as the special coastal habitats of County Galway.

## COURSE DELIVERY

Each module comprises seminars, fieldwork and assessment. Assessment will be in the form of blogs, wikis, podcasts, short films or learning journals. Students can choose an individual module, or do both modules and attend the entire four-week course. The course is delivered by the Applied Ecology Unit, NUI Galway.

## ENTRY REQUIREMENTS

The course is aimed at students who have completed two full years at university or college level before being admitted to the programme and are undertaking any Ecology, Environmental Science, Geography, Botany, Zoology, Natural History or Natural Heritage course.

Students should also have attained a minimum GPA of 3.0 on a 4.0 scale (or equivalent).

## PROGRAMME DETAILS

### Programme Queries:

Contact: Elaine O'Riordan

Tel: + 353 91 495921

Email: [elaine.oriordan@nuigalway.ie](mailto:elaine.oriordan@nuigalway.ie)

### Dates:

**Course 1:** arrival Sunday, 17 June, 2018 (class commences Monday, 18 June) - departure Saturday, 30 June, 2018

**Course 2:** arrival 1 July, 2018 (class commences Monday, 2 July) - departure Saturday, 14 July, 2018

## Credits:

3 Semester Credits/6 ECTS Credits per two-week course

## Tuition and Fees:

€1,475 per course

## IEE GENERATION STUDY ABROAD SCHOLARSHIP

Students enrolled at IEE Generation Study Abroad partner institutions, may apply for a scholarship worth €500. Three scholarships are available for this programme. Please see our course website for further information.

## ACCOMMODATION

€700 - Family Guesthouse (with Irish breakfast - single occupancy)

€550 - Family Guesthouse (with Irish breakfast - sharing)

€475 - Student Residence (without breakfast - single occupancy)

## APPLY

**Apply online at:** [www.nuigalway.ie/international-summer-school/apply/](http://www.nuigalway.ie/international-summer-school/apply/)

**Contact:** Maria Brady **Email:** [summerschool@nuigalway.ie](mailto:summerschool@nuigalway.ie)

**Application deadline:** Friday, 20 April, 2018

[www.nuigalway.ie/international-summer-school/courses/ecology/](http://www.nuigalway.ie/international-summer-school/courses/ecology/)





# EDUCATION IN IRELAND

Academic Director: Nuala McGuinn

This programme is designed to offer teachers the opportunity to study particular aspects of the Irish education system and, concurrently, to study the history, literature and culture of Ireland. It is suitable for elementary and secondary teachers, adult learning practitioners, minority language and special education teachers, those involved in school administration and graduate researchers.

## COURSE CONTENT

The Education in Ireland Summer School explores how historical, social and cultural perspectives and events have shaped how education in Ireland is practiced. The prevailing structure of educational activities is studied to allow reflective comparison of educational purposes, pedagogical approaches and philosophies against known fields of practice. The programme aims to develop a deep understanding of how education has been and continues to be shaped by political, cultural and economic concerns.

## COURSE DELIVERY

Lectures, seminars, meetings with Irish educators, visits to educational institutions, guided cultural tours, exposure to Irish music, language and theatre and access to relevant videotapes from the University library contribute to gaining insights into the evolution of educational practices.

Participants have the opportunity to meet with Irish educators during seminars and visits to educational and social institutions in urban and rural settings. Special arrangements for informal meetings between individual participants and their counterparts in Ireland will be facilitated during the programme. Guided cultural tours enable a realistic interaction with the music, language and people of Ireland.

## FIELD TRIPS

Field trips are an important part of the Education in Ireland Programme. Students will visit Inishbofin Island, Omev Island, The Burren, Coole Park, Dysert O'Dea Castle, Kylemore Abbey and Clonmacnoise.

## ENTRY REQUIREMENTS

While there are no specific entry requirements, the programme is particularly suitable for practicing teachers, graduate students and post-doctoral researchers focusing on:

- Global perspectives in education
- International education and curriculum
- Comparative and international education
- Intercultural education
- International training and education
- International perspectives in education policy, planning and practice
- Teacher research (Kindergarten, Elementary, Middle, and High School)

## PROGRAMME DETAILS

### Arrival and orientation:

Thursday, 28 June, 2018 (classes commence Friday, 29 June, 2018) - departure Saturday, 21 July, 2018

### Credits:

6 Semester Credits/12 ECTS Credits

### Tuition and Fees:

€2,150

### ACCOMMODATION

€750 – Student Residences (without breakfast, single occupancy)



## APPLY

**Apply online at:** [www.nuigalway.ie/international-summer-school/apply/](http://www.nuigalway.ie/international-summer-school/apply/)

**Contact:** Maria Brady **Email:** [summerschool@nuigalway.ie](mailto:summerschool@nuigalway.ie)

**OR Nuala McGuinn Email:** [nuala.mcguinn@nuigalway.ie](mailto:nuala.mcguinn@nuigalway.ie)

**Application Deadline:** Friday, 20 April, 2018

**[www.nuigalway.ie/international-summer-school/courses/educationinireland/](http://www.nuigalway.ie/international-summer-school/courses/educationinireland/)**

# IRISH LANGUAGE

Academic Director: Dr Dorothy Ní Uigín

The opportunity to learn Irish in its natural environment is offered by this course. A range of Irish-language courses are offered at beginners', elementary, intermediate and advanced levels each summer. These courses are based at the University's Irish-Language Centre (Áras Mháirtín Uí Chadhain), An Cheathrú Rua in the heart of Connemara. Quite apart from being a region of great beauty, Connemara is a major Gaeltacht (Irish-speaking district) and has a rich folk tradition. The village of An Cheathrú Rua provides an ideal location for learning Irish.

## COURSE CONTENT

**SS102 Beginners' Course** (A1 on the Common European Framework of Reference for Languages)

Designed for those who have **no previous** knowledge of Irish, this four-week intensive course provides a basic knowledge of spoken Irish and a general introduction to Irish linguistic culture.

**SS103 Elementary Course** (A2 on the Common European Framework of Reference for Languages)

This is suitable for those with some knowledge of the spoken language. It aims to help participants express themselves at an improved level of fluency.

**SS104 Intermediate Course** (B1 on the Common European Framework of Reference for Languages)

The course is offered to students who have a general knowledge of Irish-language structures and a good vocabulary. It aims to help participants become fluent and communicate more effectively in the spoken dialect of Connemara Irish.

**SS105 Ardchúrsa** (B2 on the Common European Framework of Reference for Languages)

Tá an Ollscoil ag tairiscint cúrsa dóibh siúd a bhfuil ardchaighdeán Gaeilge acu. Beidh na rannpháirtithe in ann labhairt go líofa agus beidh tuiscint acu ar struchtúir agus rialacha na teanga.

## COURSE DELIVERY

Each course will include:

- Intensive instruction in spoken Irish each day
- Special classes in traditional Irish singing and dancing
- Introductory lectures on relevant topics, including Irish history, literature, folklore and society

## CULTURAL ACTIVITIES

Excursions and visits are arranged to several Irish-speaking locations to experience language and culture in their natural environment. Towns and villages that are visited include Ros a' Mhíl, Ros Muc and An Spidéal, with its local specialised crafts. The course will include receptions and evenings of traditional Irish entertainment for students.

## ENTRY REQUIREMENTS

Courses on offer are at beginners', intermediate and advanced level. Students are registered for the course best suited to their standard in the language.

## PROGRAMME DETAILS

### Arrival and Orientation:

Friday, 13 July, 2018 and departure Friday, 10 July, 2018

### Credits:

6 Semester Credits/12 ECTS Credits (per course)

### Tuition and Fees:

€1,500

### \*ACCOMMODATION:

€990 – full board, sharing

€1,410 – full board, single room

\*Accommodation is provided with Irish-speaking families. Students who have some knowledge of Irish may request to stay in accommodation with students of similar ability (applicants wishing to avail of this facility should complete a special form after enrolment). All participants are required to stay in approved accommodation.

## SCHOLARSHIPS

The Fulbright Commission offers Gaeltacht Scholarship Awards to US citizens while the Ireland Canada University Foundation offers scholarships to Canadian citizens who wish to study the Irish language. The Irish Embassy in Hungary offers a scholarship to Hungarian citizens interested in learning the Irish language.

## APPLY

Apply online at: [www.nuigalway.ie/international-summer-school/apply/](http://www.nuigalway.ie/international-summer-school/apply/)

Contact: Maria Brady Email: [summerschool@nuigalway.ie](mailto:summerschool@nuigalway.ie)

Application Deadline: Friday, 20 April, 2018

[www.nuigalway.ie/international-summer-school/courses/irishlanguage/](http://www.nuigalway.ie/international-summer-school/courses/irishlanguage/)



# IRISH STUDIES

Irish Studies looks at the diversity of 'Irishness' through literature, culture, history and language. This programme gives a comprehensive introduction to the area, taking elements from all the contributing disciplines and providing a series of complementary integral educational field trips. The seminars focus on key themes, such as Identity, Emigration and Religion, as well as providing a range of elective courses, as outlined.

## COURSE CONTENT

### SS115 Representing Ireland – Literature & Film

Fiction, poetry, drama and film have all been used to represent 'Ireland' and 'Irishness'. This course analyses the varied ways this has been done in English-language media. The course is structured around themes like the representation of 'The West', the contrast between city and country, the politics of theatre, gender identity, and the meaning of nationality. We examine works from writers like W.B. Yeats, James Joyce, Augusta Gregory, J.M. Synge, Liam O'Flaherty, Brian Friel, Mary O'Malley and Patrick McCabe. We also view and discuss movies directed by American and Irish film-makers.

### SS116 The Archaeological Heritage of Ireland; from the first settlers to Medieval castles.

Ireland's archaeological heritage is one of the richest in western Europe. The development of prehistoric Irish societies can be seen in the megalithic tombs of the Neolithic, the wealth of bronze and gold in the succeeding Bronze Age, and in the great royal sites such as Tara and Navan of the Celtic Iron Age. From the Early Christian Period, monastic ruins and high crosses survive at sites such as Clonmacnoise, while the finds from Dublin tell us of the Viking raids and settlement.

The remains of later earth and timber fortifications and stone castles reveal the story of the Anglo-Norman invasion and subsequent power struggles.

This course charts the evidence for human societies in Ireland over ten millennia from the island's initial colonization by small groups of hunter-gatherers through to the Medieval period. The archaeology of the entire island of Ireland will be covered with particular emphasis on the archaeology of the Burren, a remarkable upland area just south of Galway where archaeological remains of all periods are well preserved and visible.

NUI Galway is ideally positioned amongst some of Ireland's most well-preserved archaeological landscapes and this course includes two trips to the nearby Burren region to visit some of the prehistoric and historic-period sites which are highlighted in the lectures. This region is the focus of Course Director Dr. Carleton Jones's research and students will have the opportunity to see first-hand some of the sites that Dr. Jones has excavated as well as learn about on-going research involving cutting-edge techniques such as ancient DNA and stable isotope analyses.

### SS117 Irish History: Conflict, Identity and the Shaping of Modern Ireland

This course offers a broad survey of Irish history. The initial lecture will set the stage by considering some aspects of the early and medieval periods, but the principal focus will be on the modern centuries, beginning with the Tudor conquest of Ireland. By charting the history of Anglo-Irish relations through major political and military conflicts in the seventeenth and eighteenth centuries, special attention will be given to the British attempt to assimilate Ireland under

the Act of Union from 1801. We will examine the mass social and political campaigns that emerged in the nineteenth century and the rise of the modern ideologies of Irish unionism and nationalism, including the influential Irish-American dimension of the latter, which took shape in the decades after the Great Famine (1845-50). Ultimately the course will examine the undoing of the Union between Britain and Ireland in 1921, the nature of the partition agreement which underpinned the constitutional settlement at that time, and how sustained violent conflict in Northern Ireland from the late 1960s forced politicians and political leaders in these islands and beyond to revisit the 'Irish Question'.

The approach taken in this module is thematic. Classes will consist of a mixture of lectures and discussions; and to facilitate a closer treatment of one of the central themes of the course, a class debate will take place, mid-term, in one of the historic buildings in Galway. Choice readings and links to two award-winning documentaries will be made available on the electronic Blackboard site during term.

### SS118 Introduction to Art in Ireland: Exploring Ireland's vibrant artistic heritage from prehistory to the 'Golden Age' of the 8th century AD

Ireland has a rich and vibrant artistic heritage, extending back to c. 3500 BC; this course traces the development of Irish art beginning with decorated megaliths and the exquisite corpus of Irish Bronze Age gold work, before turning its attention to the introduction of Celtic or La





Tène art styles into Ireland around the 4th century BC.

Following the Roman conquest of western Europe, the Classical roots of La Tène art re-emerge as a dominant element in Irish art of the first few centuries AD and continue, as a core element in the motif-book of early Christian art, into the 7th and 8th century. Dominated by fantastical animals, Germanic art of Dark Age Europe was also incorporated into Insular art styles. An appreciation of style, symbolism and iconography in Early Christian art is integral to this module and treated in relation to the sublime artistic achievements of the 'Golden Age' of Irish art such as illuminated manuscripts, ecclesiastical metalwork such as the Ardagh Chalice and Irish high crosses. In addition to its aesthetic appeal, in revealing cross-cultural influences and the more arcane concerns of its audience, early Irish art provides a unique window on the past that can be explored through iconographical analysis. This course includes a trip to the National Museum and the Book of Kells Exhibit in Dublin.

### **SS119 Creative Writing: Poetry and Fiction**

This course will explore the writing of fiction and poetry from first steps to final polish. How do poems begin, what can we use as a starting point for our stories, how do we sustain a poem or a story to its proper conclusion. Through various reading and writing exercises this course will road test several experimental techniques which can be used to spark new work and ideas. The course will work towards having the student

complete a significant piece of work to a high degree of finish.

Typically, classes will consist of a short writing exercise followed by a close reading of a classic text. In the workshop section, students can expect to have their work discussed at least twice by the class over the duration of the course. Feedback will be given by the tutor - two thirds of the way through the course, and upon receiving the final grade. The final portfolio of work will be graded on its imaginative skill and originality.

### **SS120 Gaelic Culture & Literature: From Cú Chulainn (Cuchulainn) to the Cultural Revival and beyond**

Gaelic literature is the oldest vernacular literature in Western Europe; this course introduces the student to early Gaelic narrative literature and gives insights into the culture(s) which created that literature. Students read and interpret a selection of texts in translation, including tales of Cú Chulainn and the Ulster Cycle, Fionn Mac Cumhaill and the Fianna and tales of the Otherworld, and develop skills in engaging critically with the literature. Tracing the vicissitudes of the Irish language and its culture from the seventeenth century onwards, the course explores Irish folklore and the oral storytelling tradition and examines the emergence and development of modern Gaelic literature from the period of the Cultural Revival in the late-nineteenth century. The representation of so-called 'Gaelic' identity as portrayed through Irish language literature and folklore is explored; through the reading of selections of Gaelic prose

and poetry in translation, students gain insights into the rapid changes within Gaelic culture from the nineteenth century as represented in folklore and literature. While demonstrating an intimate awareness of formal and thematic developments in a broad range of world literatures, contemporary Gaelic prose and poetry engages closely with earlier sources within the Gaelic literary, oral and cultural traditions. The course develops students' understanding of the dynamic interplay between the traditional and the contemporary within modern Gaelic literature. A knowledge of Irish is not a prerequisite for the course; all classes are through English. Introductory classes in the Irish language will be provided to interested students.

### **SS121 Irish Society: Stasis and Change in the Ambiguous Republic**

Irish society is interesting. Really interesting. It underwent a complex process of dramatic and relatively rapid social change over the 20th Century, propelling it from being a predominantly rural, Catholic, insular, and socially homogeneous society to become one of the 'most globalized' countries in the world, all within just a few short decades. In some ways, it is much the same; in others, it is profoundly different. In this module we explore, and explain, aspects of this process, and its effects on Irish society, mainly from a sociological perspective. Using the changing economy as a backdrop, we go on to explore transformations in key social institutions, such as religion, education, the family, the media, politics and power, and the changing

role and position of women in Irish society. We will also address some of the problems and strains that have emerged, in part, because of these profound societal changes, such as social inequality and social class, immigration and race, and crime. The module is designed to be lively and engaging, and no previous knowledge of either sociology or Irish society is required. It will, however, provide a very useful backdrop to the experience of being in Ireland, and offer valuable and critical insights into 'Irish identity', and the ambiguities of social change for a small country in a global society.

### **SS122 Negotiating Identity: Irish Traditional Music and Dance**

This module will examine current and historical performance and transmission of Irish traditional dance, instrumental music and song, with specific reference to the traditions of the West of Ireland. Utilizing anthropological and cultural history frameworks, students will explore the place of traditional performance arts in Irish culture, and the central roles these traditions play in formation of local, national and transnational identities. Core elements include an examination of music in the post-famine period in Ireland; music among the Diaspora; revivals of dance and music; sean-nós song; style and the uilleann piping tradition. Conceptual issues of authenticity and tradition will underscore much of the discussions and central questions such as what constitutes traditional performance and the transformative potential of dance and music will be explored and exemplified through a variety of performance platforms. Students will also have the

opportunity to meet with performers and take sean-nós song and dance workshops, in addition to having an instrumental traditional music showcase as part of the programme.

### **Irish Language Classes**

Introductory classes in the Irish language are provided for interested students as part of the Irish Studies programme.

### **FIELD TRIPS**

Field trips are an integral part of the programme. All students participate on field trips to Dingle and the Aran Islands. Students of SS115 Representing Ireland – Literature & Film will visit Coole Park, Thoor Ballylee and Kilmacduagh. Students of SS116 The Archaeological Heritage of Ireland will visit sites in the Burren.

Students of SS118 Introduction to Art in Ireland will visit the Book of Kells and the National Museum in Dublin.

### **COURSE DELIVERY**

Teaching is by means of lectures, seminars, dramatic performances, educational field trips, guided tours and informed contact with the music, language and people of Ireland. An interdisciplinary approach is used within each course and between the courses of the Irish Studies programme.

Students have access to the library and IT facilities of the University. Assessment for those requiring credits is carried out on a continuous basis.

### **CREDITS**

Each course carries 3 Semester Credits/6 ECTS Credits at undergraduate level.

### **GRADUATE CREDITS**

Special advisory sessions and an extended essay are offered to students wishing to obtain graduate credits.

### **ENTRY REQUIREMENTS**

Applicants are normally required to be university graduates or have completed two full years at university or college level before being admitted to the programme. Students should also have attained a minimum GPA of 3.0 on a 4.0 scale (or equivalent).

### **PROGRAMME DETAILS**

#### **Arrival and orientation:**

Monday, 18 June, 2018 (classes commence Tuesday, 19 June, 2018) - departure Tuesday, 17 July, 2018

#### **TUITION AND FEES:**

€2,100

#### **ACCOMMODATION**

€1,350 - Family Guesthouse (with Irish breakfast - single occupancy)

€1,200 - Family Guesthouse (with Irish breakfast - sharing)

€900 - Student Residence (without breakfast - single occupancy)

## **APPLY**

**Apply online at:** [www.nuigalway.ie/international-summer-school/apply/](http://www.nuigalway.ie/international-summer-school/apply/)

**Contact:** Maria Brady **Email:** [summerschool@nuigalway.ie](mailto:summerschool@nuigalway.ie)

**Application Deadline:** Friday, 20 April, 2018

[www.nuigalway.ie/international-summer-school/courses/irishstudies/](http://www.nuigalway.ie/international-summer-school/courses/irishstudies/)

# ACHILL ARCHAEOLOGICAL FIELD SCHOOL

Academic Director: Dr Stefan Bergh

Field Director: Dr Eve Campbell

Established in 1991, the Achill Archaeological Field School has over 25 years of experience in training archaeology and anthropology students. During the first half of the summer (Session 1) we will be undertaking a fifth season at the pre-Famine settlement at Keem Bay. During the second half of the summer (Session 2) we will be investigating the deserted early modern coastal settlement of Caruan Point.

## COURSE CONTENT

The Field School offers two-, four and six-week modular courses that come with 3, 6 and 9 semester credits respectively. The course covers a full range of excavation and site recording techniques, surveying procedures including GPS and photogrammetry, and lab work that includes artefact processing, and digitising site drawings.

## COURSE DELIVERY

The key to our training is small group sizes, combined with instruction that is delivered directly by highly experienced archaeologists. These are led by Dr Eve Campbell, Director of Fieldwork. In this way we ensure that each lesson is delivered in great detail, and that each student fully understands the different procedures and the rationales behind them.

## ENTRY REQUIREMENTS

We accept Students of 17 years of age and upwards who must be physically fit, as fieldwork is quite strenuous.

## PROGRAMME DETAILS

### Courses:

SS106 Introduction to Irish Archaeology  
SS107 Archaeological Field Studies  
SS108 Data Analysis

### Dates:

#### Session One

##### Archaeological Excavation & Recording 1:

May 21 – June 29, 2018 (6 weeks)  
Includes Courses: SS106, SS107, SS108

##### Archaeological Excavation & Recording 3:

May 21 – June 15, 2018 (4 weeks)  
Includes Courses: SS106, SS107

##### Archaeological Excavation & Recording 5:

June 18 – June 29, 2018 (2 weeks)  
Includes Course: SS108

#### Session Two

##### Archaeological Excavation & Recording 2:

July 2 – August 10, 2018 (6 weeks)  
Includes Courses: SS106, SS107, SS108

##### Archaeological Excavation & Recording 4:

July 2 – July 27, 2018 (4 weeks)  
Includes Courses: SS106, SS107

### Archaeological Excavation & Recording 6

July 30 – August 10, 2018 (2 weeks)  
Includes Course: SS108

### Credits:

3 Semester Credits/6 ECTS Credits  
(per course)

### Tuition and Fees:

2 weeks – €1,975  
4 weeks – €3,450  
6 weeks – €4,500

(All fees include tuition, accommodation, materials and local transport)



## APPLY

**Apply online at:** [www.nuigalway.ie/international-summer-school/apply/](http://www.nuigalway.ie/international-summer-school/apply/)

**Contact:** The Administrator, Achill Archaeological Field School, Dooagh, Achill Island, Co Mayo

**Tel:** +353 (0)98 43564 **or Email:** [info@achill-fieldschool.com](mailto:info@achill-fieldschool.com)

**Web:** [www.achill-fieldschool.com](http://www.achill-fieldschool.com)

**Application Deadline:** April 27th, 2018 (Session 1) and June 1st, 2018 (Session 2)

[www.nuigalway.ie/international-summer-school/courses/achillarchaeology/](http://www.nuigalway.ie/international-summer-school/courses/achillarchaeology/)



# CAHERCONNELL ARCHAEOLOGICAL FIELD SCHOOL

Academic and Field Director: Dr Michelle Comber

If you like the idea of working on a real archaeological dig and the prospect of discovering medieval artefacts in an ancient landscape, the Caherconnell Archaeological Field School in the Burren region is for you.

The Burren is a large karst landscape and a botanist's paradise located in Co. Clare on Ireland's west coast.

Caherconnell Archaeological Field School lies in the heart of this region. An international field school was established in 2010 to undertake research excavations at the site of Caherconnell Stone Fort and its environs. Work to date has revealed that this high-status cashel (a medieval settlement form) was built at the end of the traditionally accepted date range for cashels, in the 10th/11th century, and that it continued to be lived in up to the start of the 17th century.

Other exciting discoveries include a late Neolithic/Early Bronze Age house, a 7th-9th century settlement, a medieval stone structure, 15th-century human remains, and a wide range of artefacts, including medieval silver coins, decorated bronze dress-pins, a decorated silver finger ring, a medieval harp-peg, lead musket shot, finely made iron arrowheads, beads, metal tools, decorated bone combs, decorated quernstones, prehistoric lithics, and decorated prehistoric pottery.

## PROGRAMME DETAILS

### Dates:

- 6-week course: Introduction (SS109) and Intermediate (SS110) Excavation, Monument and Artefact Survey (SS112).

Start dates – May 28, June 11, June 25, 2018

- 4-week course: Introduction (SS109) and Intermediate (SS110) Excavation

Start dates – May 28, July 9, 2018

- 2-week course: Introduction to Excavation (SS109)

Start dates – May 28, July 9, July 23, 2018

- 2-week course: Intermediate Excavation (SS110)

Start dates – June 11, July 23, 2018

- 2-week course: Monument and Artefact Survey (SS112)

Start date – June 25, 2018

### Credits:

3 semester credits / 6 ECTS credits per 2-weeks

### Tuition and Fees:

2 weeks – €2,350

4 weeks – €3,995

6 weeks – €5,595

Fees cover the following: tuition, insurance, equipment, accommodation (full board), transport to and from the site daily, breakfast, lunch & dinner, tea breaks & day trip(s).



## APPLY

**Apply online at:** [www.nuigalway.ie/international-summer-school/apply/](http://www.nuigalway.ie/international-summer-school/apply/)

**Contact:** Caherconnell Archaeological Field School, Caherconnell Stone Fort, Carron, Kilfenora, Co Clare

**Tel:** +353-65-7089999 **or Fax:** +353-65-7089888 **Email:** [info@caherconnell.com](mailto:info@caherconnell.com)

**Web:** <http://caherconnell.com/archaeology/>

**[www.nuigalway.ie/international-summer-school/courses/caherconnellarchaeology/](http://www.nuigalway.ie/international-summer-school/courses/caherconnellarchaeology/)**



# GALWAY ARCHAEOLOGICAL FIELD SCHOOL

Academic Director: Dr Kieran O'Connor

Field Director: Dr Rory Sherlock

The Galway Archaeological Field School has been established to provide students with hands-on experience of the archaeology and architecture of medieval Ireland. We specialise in this field and seek to immerse our students in the wealth of medieval castles, churches and monasteries which lie scattered across the Irish landscape. The two-week architecture course involves daily visits to some of the most important buildings of medieval Ireland, while in the excavation courses, students participate in a research excavation at a medieval castle.

The ethos of the field school is founded on high quality, small-group tuition and we aim to give every student close attention so that they may fully understand the skills they learn and thereby enjoy their course to the fullest degree possible. Students who wish to extend their stay in Ireland can, for example, combine the two-week architecture course with the four-week excavation course (e.g. Sessions 1 + 2 or Sessions 3 + 4) to create an unforgettable six-week stay which immerses them fully in Irish culture, history and heritage, while students focussed on excavation can combine Sessions 2 & 3, taking both the introductory and advanced excavation courses in one eight-week, intensive stay.

At weekends, students have free time to explore the local towns and villages or to visit nearby Galway City. Galway is easily accessible via public transport from the international airports at Dublin and Shannon and so the Galway Archaeological Field School is ideally placed to welcome students who seek to gain hands-on experience of archaeological fieldwork, to learn about medieval Ireland and to experience life in modern Ireland to the fullest extent.

## ENTRY REQUIREMENTS

Students must be 18 years old at the time of course commencement.

## PROGRAMME DETAILS

### Dates:

#### Session 1:

May 21 - June 1, 2018

(Course SS124 - Castle, Cloisters & Churches: The Architecture of Medieval Ireland)

#### Session 2:

June 4 - June 29, 2018

(Course SS109 - Introduction to Archaeological Excavation or SS125 - Recording Methods in Archaeological Survey & Excavation)

#### Session 3:

July 2 - July 27, 2018

(Course SS109 - Introduction to Archaeological Excavation or SS125 - Recording Methods in Archaeological Survey & Excavation)

#### Session 4:

July 30 - August 10, 2018

(Course SS124 - Castle, Cloisters & Churches: The Architecture of Medieval Ireland)

## Course Fees:

Please refer to GAFS website  
[www.galwayarchaeologicalfieldschool.com](http://www.galwayarchaeologicalfieldschool.com)



## APPLY

**Apply online at:** [www.nuigalway.ie/international-summer-school/apply/](http://www.nuigalway.ie/international-summer-school/apply/)

**Contact:** Dr Rory Sherlock, Director, Galway Archaeological Field School, Oughterard, Co Galway.

**Tel.:** +353 (0)87 2867061 **Email:** [info@galwayarchaeologicalfieldschool.com](mailto:info@galwayarchaeologicalfieldschool.com)

**Web:** [www.galwayarchaeologicalfieldschool.com](http://www.galwayarchaeologicalfieldschool.com)

**[www.nuigalway.ie/international-summer-school/courses/galwayarchaeology/](http://www.nuigalway.ie/international-summer-school/courses/galwayarchaeology/)**

# THE IRISH FIELDSCHOOL OF PREHISTORIC ARCHAEOLOGY (IFPA)

Academic Director: Dr Carleton Jones

Field Director: Dr Ros Ó Maoldúin

Our fieldschool (IFPA) combines cutting edge research into prehistoric societies with practical hands-on education. We want our students to understand our research questions, think critically about the techniques we employ and fully engage in the interpretive process.

## COURSE CONTENT

During 2018, we will concentrate our efforts on surveying and excavating the prehistoric ceremonial complex on Knockloon Hill, in the Burren, Co. Clare. Known remains include a large later prehistoric barrow, and three recently discovered circular enclosures, at least one of which is likely to represent a large palisaded enclosure.

We offer three courses: a four-week excavation course, a two-week survey course and a one-week experimental archaeology course. It is possible to combine any two or three consecutive courses.

## COURSE DELIVERY

The four-week excavation course will cover techniques of archaeological excavation, drawing, digital photography, photogrammetry, total station survey, 3D modelling, context recording, osteoarchaeology and environmental sampling. Students will receive weekly lectures and tutorials from visiting professors, as well as from our fieldschool staff. In 2018, we will excavate the first barrow ever excavated in Co. Clare and place trenches across several other enclosures identified in our 2017 geophysical survey. We expect to find human bone and students will likely get first-hand experience of its excavation, recording and analysis.

The two-week survey course will cover drawing, digital photography, photogrammetry, total station survey, 3D modelling, an introduction to QGIS and an introduction to geophysical survey. It will also include visits to some of Ireland's most famous prehistoric sites, the National Museum and several of our less-well-known prehistoric gems.

The one-week experimental archaeology course will concentrate on later Bronze Age materials and include workshops on bronze casting and pottery production. All materials will be provided and students will be allowed take a selection of what they make away with them.

## ENTRY REQUIREMENTS

Applicants must be 17 or over, reasonably fit and willing to learn.

## PROGRAMME DETAILS

High quality self-catered accommodation is provided in a nearby village, Lisdoonvarna. Transfers from Ennis town or Shannon airport, both easily accessible from Dublin or Galway, can be arranged. On weekends students are free to explore the nearby Burren, or visit Ennis town and Galway City.

## Dates:

### Session 1:

May 21 - June 1, 2018  
(3 Semester Credits/6 ECTS Credits)  
Course title: Irish Prehistory and Archaeological Survey (2 weeks)

### Session 2:

June 4 - June 29, 2018  
(6 Semester Credits/12 ECTS Credits)  
Course title: Archaeological Excavation and Recording Techniques (4 weeks)

### Session 3:

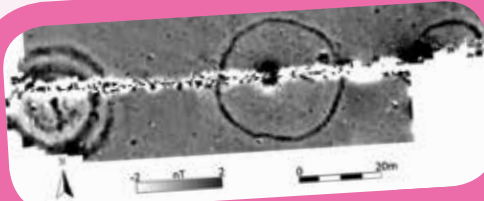
July 2 - July 6, 2018  
(3 Semester Credits/6 ECTS Credits - with essay)  
Course title: Experimental Archaeology and the Material Culture of the Irish Later Bronze Age (1 week)

### Session 4:

July 16 - August 10, 2018  
(6 Semester Credits/12 ECTS Credits)  
Course title: Archaeological Excavation and Recording Techniques (4 weeks)

### Session 5:

August 13 - August 24, 2018  
(3 Semester Credits/6 ECTS Credits)  
Course title: Irish Prehistory and Archaeological Survey (2 weeks)



*Knockloon-MG-Survey Results*



#### **Tuition and fees:**

(Accommodation included)

Experimental Archaeology (1 week)  
€900

Irish Prehistory and the Tombs of the  
Ancestors (2 weeks) €1,750

Archaeological Excavation and  
Recording Techniques (4 weeks)  
€3,450

Combined 5 week course (sessions  
2 & 3 or sessions 3 & 4) at the  
discounted price of €4,200

Combined 6 week course (sessions  
1 & 2 or sessions 4 & 5) at the  
discounted price of €4,800

Combined 7 week course (sessions  
1, 2 & 3 or sessions 3, 4 & 5) at the  
discounted price of €5,350

*Survey, excavate  
and experiment  
with the IFPA*



#### **APPLY**

**Apply online at:** [www.nuigalway.ie/international-summer-school/apply/](http://www.nuigalway.ie/international-summer-school/apply/)

**Contact:** Dr Ros Ó Maoldúin

The Irish Fieldschool of Prehistoric Archaeology, Baile an tSagairt, Spiddal, Co. Galway

**Tel:** +353 (0)87 094 0034 **Email:** [ros@prehistoricfieldschool.ie](mailto:ros@prehistoricfieldschool.ie)

**Website:** [www.prehistoricfieldschool.ie](http://www.prehistoricfieldschool.ie)

[www.nuigalway.ie/international-summer-school/courses/ifpa/](http://www.nuigalway.ie/international-summer-school/courses/ifpa/)





## GENERAL INFORMATION

### ACCOMMODATION – Host Families

Students may live with host families adjacent to the University.

A full Irish breakfast will be provided by their hosts as part of the overall cost.

Accommodation costs are listed separately for each programme.

### ACCOMMODATION – Student Residences (Apartment Style)

This type of housing provides students with single rooms in fully furnished, self-catering apartments. The residences are located close to a supermarket for shopping requirements. Laundry facilities are available on site. Bed linen, crockery, etc are provided in the apartments. Student residences are approximately a 15 minute walk to class.

Charges listed are for accommodation only and are listed separately for each programme.

NB: The balance of tuition/fees and accommodation payments must be finalised by 30 May, 2018.

### COSTS

Fees are listed separately for each course. Included are tuition costs, educational field trips, theatre visits and a social programme.

Payment can be made online using your credit card. Details are provided on our website and included under “How to Apply”.

### CREDITS AND ENROLMENT

Credits are offered at graduate and undergraduate levels. Assessment will be based on attendance and completion of appropriate written

assignments or examinations, as prescribed by each Course Director. Special graduate level assignments are arranged for students requiring graduate credits. Courses may be attended also on a non-credit basis.

Applicants should complete the enrolment form online at: [www.nuigalway.ie/international-summer-school/apply/](http://www.nuigalway.ie/international-summer-school/apply/) with the appropriate booking deposit(s), which is non-refundable after the enrolment deadline.

### TOURS AND SOCIAL EVENTS

Tours which are included in the cost of Irish Studies and Education in Ireland will be selected from the following: the Aran Islands; the Dingle Peninsula, Co Kerry; Clonmacnoise; and Yeats’s sites in Galway. Visits to local theatres are scheduled.

### FURTHER INFORMATION:

Maria Brady

International Summer School Office, National University of Ireland, Galway, Ireland

**Telephone:** +353 (0)91 495442 **Email:** [summerschool@nuigalway.ie](mailto:summerschool@nuigalway.ie)

[www.nuigalway.ie/international-summer-school/](http://www.nuigalway.ie/international-summer-school/)



[facebook.com/summerschoolgalway/](https://facebook.com/summerschoolgalway/)



[twitter.com/gwysummerschool](https://twitter.com/gwysummerschool)



[snapchat.com/galwaysummersch/](https://snapchat.com/galwaysummersch/)



[instagram.com/gwysummerschool/](https://instagram.com/gwysummerschool/)



## FESTIVALS IN JULY

Located on the west coast of Ireland, along the Wild Atlantic Way, Galway City is considered the cultural capital of Ireland. Galway is a UNESCO City of Film and was recently selected as the European Capital of Culture 2020.

Galway, with its narrow medieval streets, historic buildings, buskers, colourful shop fronts and vibrant night life, has a bohemian feel.

The City explodes with energy during the month of July when the festival scene reaches its zenith. Galway Film Fleadh, Galway International Arts Festival and Galway Fringe Festival, bring visitors from around the world to experience the best in music, film, theatre, literature and visual art. The week long horse-racing festival, the Galway Races, at the end of July is Ireland's most well know racing festival.

Galway City's historic setting and festival scene, form the perfect backdrop to the International Summer School. Students are exposed to Irish culture and history both inside and outside the class room.

*Galway International Arts Festival*



### FURTHER INFORMATION:

[www.galwayfilmfleadh.com](http://www.galwayfilmfleadh.com)

[www.galwayfringe.ie](http://www.galwayfringe.ie)

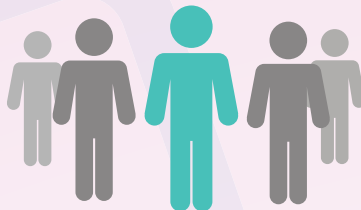
[www.giaf.ie](http://www.giaf.ie)

[www.galwayraces.com](http://www.galwayraces.com)

## DID YOU KNOW



The 2017 QS World University Rankings placed NUI Galway at number 243 in the world. This positions our University in the Top 1% globally.

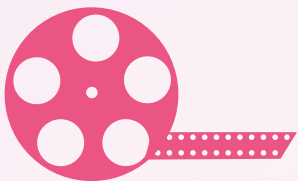


NUI Galway has a total of 3,000 international students from **115 countries**, which accounts for 20% of the overall student population.



NUI Galway is ranked in the **Top 100** most international universities in the world according to the Times Higher Education.

We are in the final stages of a **€400 million capital investment programme** - the single largest capital development plan ever undertaken by the University. This investment has transformed the campus into a world-class learning environment for our students.



Galway City is a designated **UNESCO City of Film**



**The New York Times** dubs Galway "Ireland's most charming city", "compact, walkable and filled to the brim with independent shops and restaurants".



Galway has been selected as **European Capital of Culture 2020**





**NUI Galway**  
**OÉ Gaillimh**

National University of Ireland, Galway  
Ollscoil na hÉireann, Gaillimh

[www.nuigalway.ie/international-summer-school/](http://www.nuigalway.ie/international-summer-school/)



[facebook.com/summerschoolgalway/](https://facebook.com/summerschoolgalway/)



[twitter.com/gwysummerschool](https://twitter.com/gwysummerschool)



[snapchat.com/galwaysummersch/](https://snapchat.com/galwaysummersch/)



[instagram.com/gwysummerschool/](https://instagram.com/gwysummerschool/)